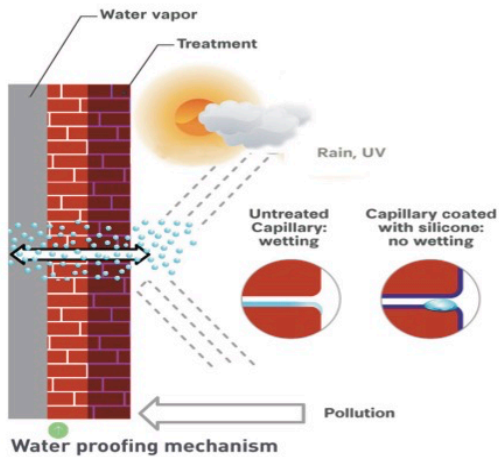




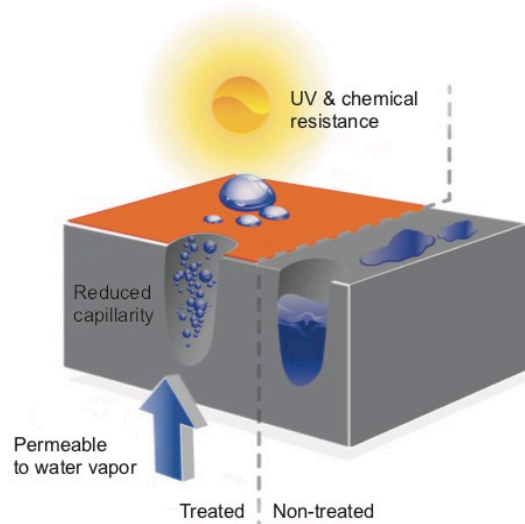
TESONMAGIC LOW-VOC, NANO-ENHANCED WATER REPELLENT (TW-200)

TESONMAGIC : HOW IT WORK & BENEFIT



- Maximum reduction of water uptake
- Permeability to water vapor : Breathability
- Resistance to UV, Reduced efflorescence
- No change in surface appearance
- Capillary action
- Low surface tension

- Hydrophobia & beading effect
- Long lasting effect
- Outstanding durability & protection
- Reduced maintenance : cost saving
- Thermal conductivity : stable
- Environmentally compatibility



TESONMAGIC vs COATINGS

TESONMAGIC	COATING
<ul style="list-style-type: none"> • Penetrate deep into substrate • Simple surface preparation • Resistant to oxidation, UV, Weathering • Long lasting protection • Easy to apply • Natural appearance (not change) • Growth technology 	<ul style="list-style-type: none"> • Act on the surface. • Complex surface preparation. • Subject to breakdown due to UV, Oxidant effect. • Surface damage -- → Protection lost (Ave:5-10 yrs) • Multiple coats using complex equipment and skilled applicators. • Form surface films which change surface appearance. • Declining technology.





TESONMAGIC LOW-VOC, NANO-ENHANCED WATER REPELLENTS (TW-200)

TESONMAGIC

TW-200 is an emulsion with nano-enhanced design to protect surfaces against moisture. This waterproofing system respects the environment since it is entirely formulated in a water base. It is free from any organic solvent and it does not contain ecotoxic surfactant. After it had dried on the surface, tesonmagic repels water and allow walls to breathe. Experience acquired shows that nano water repellents are a good answer to humidity problems in construction materials, particularly when for esthetical reasons the natural aspect of the material should be preserved. Tesonmagic has been awarded a test certificate by CSTC-Center scientifique et technique de la Construction-Belgium)

ADVANTAGE

- High water penetration resistance by capillarity action.
- Outstanding hydrophobia and beading effect.
- Versatility allowing its use on many porous mineral materials
- Very good vapour permeability, breathable with very low surface tension.
- Very slight change in the material's natural color and aspect.
- Improve pollution resistance and easy for cleaning.
- UV & chemical resistance, reduce efflorescence.
- Penetrate 2-5mm of porous substrate for long-term waterproofing.

APPLICATION :

- Concrete, Pre-cast concrete
- Brick, Masonry
- Stone, Sandy rock
- Tile Joint
- Mortar

APPLICATION INSTRUCTION :

1. Clean up substrate surface with detergent, light sand blasting or steam cleaning.
2. The surface of substrate should look dry with no damp patches before apply.
3. Apply by brush, roller or low pressure spray gun.
4. Single layer from top to bottom and avoid run down of product.
5. Whatever the application method, the product must be applied untill the surface is saturated. The glossy appearance should not remain.
6. Protect applied area at least three hours from rain.
7. Applied area require at least over night if paint over is required later.
8. Repellency require few days to reach optimum effect, subject to porosity of the substrate.
9. Water repellency effect will reduce significantly when the substrate is heavily cracked.
10. The use on dense, low porosity substrates (ie. marble, granite ...) may not be suitable, a too high concentration can lead to a slight change in the substrate aspect.

IT IS ESSENTIAL TO CARRY OUT A PRELIMINARY TEST ON THE SURFACE TO BE TREATED, TO DETERMINE THE REQUIRED DOSAGE AND THE APPLICATION METHOD

STORAGE / PACKAGING

- When stored in its original packaging at a temperature of between + 2 degree c and + 30 degree c, Tesonmagic may be stored for up to 12 months from its date of manufacture.

LIMITED WARRANTY :

Sellers and manufacturers only obligation shall be replacement of such quantity of product proved to be defective. All advice given herewith is to the best of knowledge, true and accurate. All recommendations or suggestions are made without guarantee. Since the conditions of use are beyond our control, the seller or manufacturer shall not be liable for any injuries, loss or damage, direct or consequential arising from the use of or the failure of the product. Before using, user shall determine the suitability of the product forhis intended use and user assumes all risk and liability.

COVERAGE :

Optimal waterproofing performances of the treated materials will only be obtained if adequate quantity of Teson Magic is applied : A one liter solution of Teson Magic may be sufficient to treat a surface of 3 m², but this quantity may vary since it essentially depends on the type of substrate and its absorption capability (from 0.2 litres per m², depending on the substrates).

- Mortar, Concrete : 0.3 to 0.5 l/m²
- Sand stone : 0.4 to 0.6 l/m²
- Lime stones : 0.4 to 2 l/m²
- Mineral plaster : 0.6 to 0.8 l/m²
- Brick : 0.6 to 1.2 l/m²

APPLICATION :

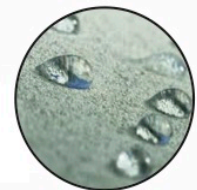
PRODUCT CODE	PACKING SIZE	PACKING SIZE	COLOUR
TW-200	20KG	PAIL	MILKY WHITE
TW-200	5KG	PAIL	MILKY WHITE
TW-200	1KG	CAN	MILKY WHITE



Concrete block



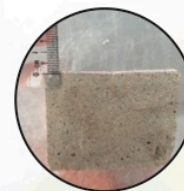
Sand stone



Mineral substrate



Beading effect



DOP
Depth of Penetration



TESONMAGIC APPLICATION METHOD



Roller



Spray gun



Roller